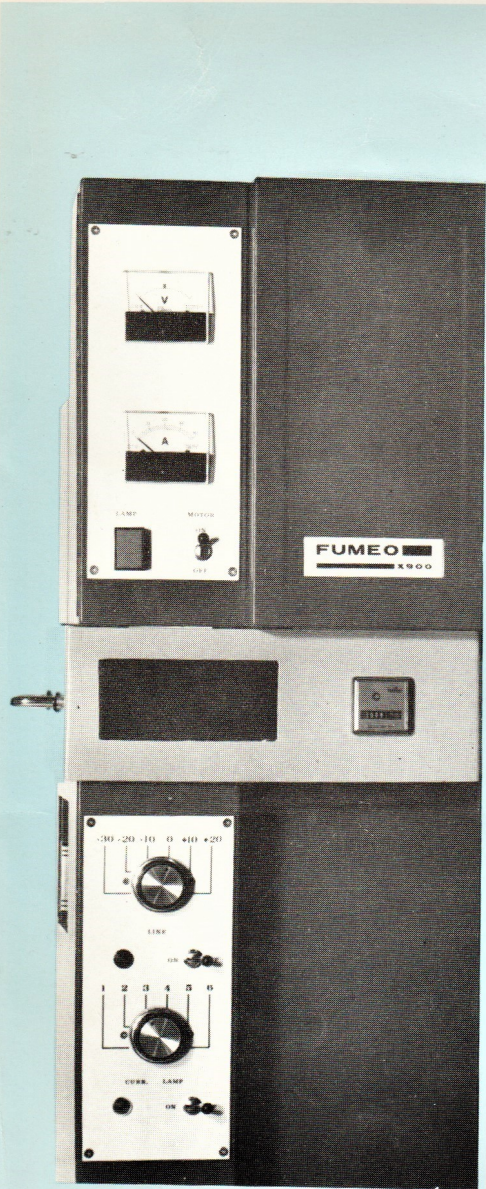


16 mm. PROFESSIONAL
SESTO - TR XENON 900

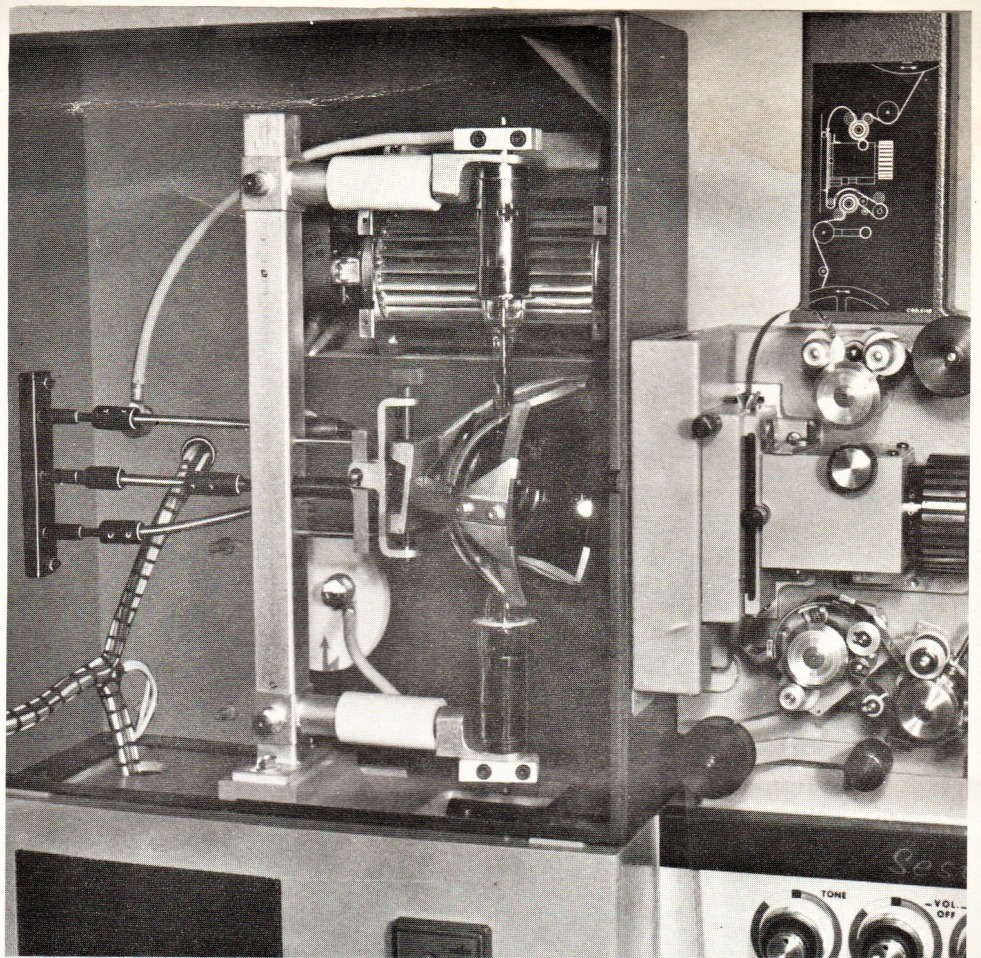


The FUMEO X900 PROJECTOR is the first « Made in Italy » motion picture equipment engineered to combine in one unit (with the only exception of the hall speaker system) all the elements providing a higher technical level of professional film projection in comparison with other equipment of current production.

The Fumeo X900 projector affords as many as two hours of uninterrupted film presentation with no attention on the part of the operator. This is possible through the adoption of a large capacity film reel and the use of a permanent arc Xenon lamp.

This PROJECTOR comes series equipped with an automatic digital counter permitting an easy check of the projection lamp OPERATING HOURS.

Through this readout the operator can immediately KNOW when the projection lamp needs prompt replacement.



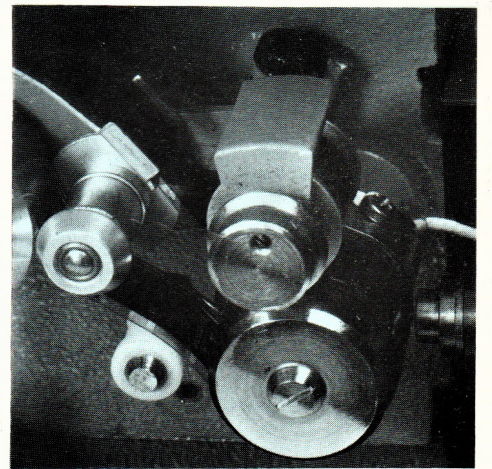
Unlike the incandescent lamps whose light is produced by a body heated up to incandescence, the XENON LAMP produces light by electrical discharge in a Xenon gas atmosphere. The light spectrum distribution of the Xenon lamp, which is not affected by current changes, is similar to that of the sun so as to enable a perfect vision above all when employed in the projection of colour films.

The brilliance of the Xenon lamp is absolutely constant because shape and clearances of lamp electrodes remain unchanged.

The lamp reflector is thus always correctly aligned. Moreover, there is no emission of toxic gases because the arc is developed inside a quartz envelope.

Arc ignition is triggered automatically by depressing a push-button. The lamp input current is adjusted by a control knob. Proper supply voltage and current levels are conveniently kept under control through the use of the measuring instruments provided.

Precise adjustment and control provisions ensure projector reliability and long life.

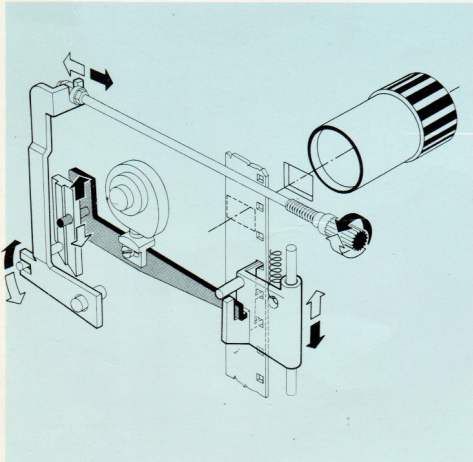
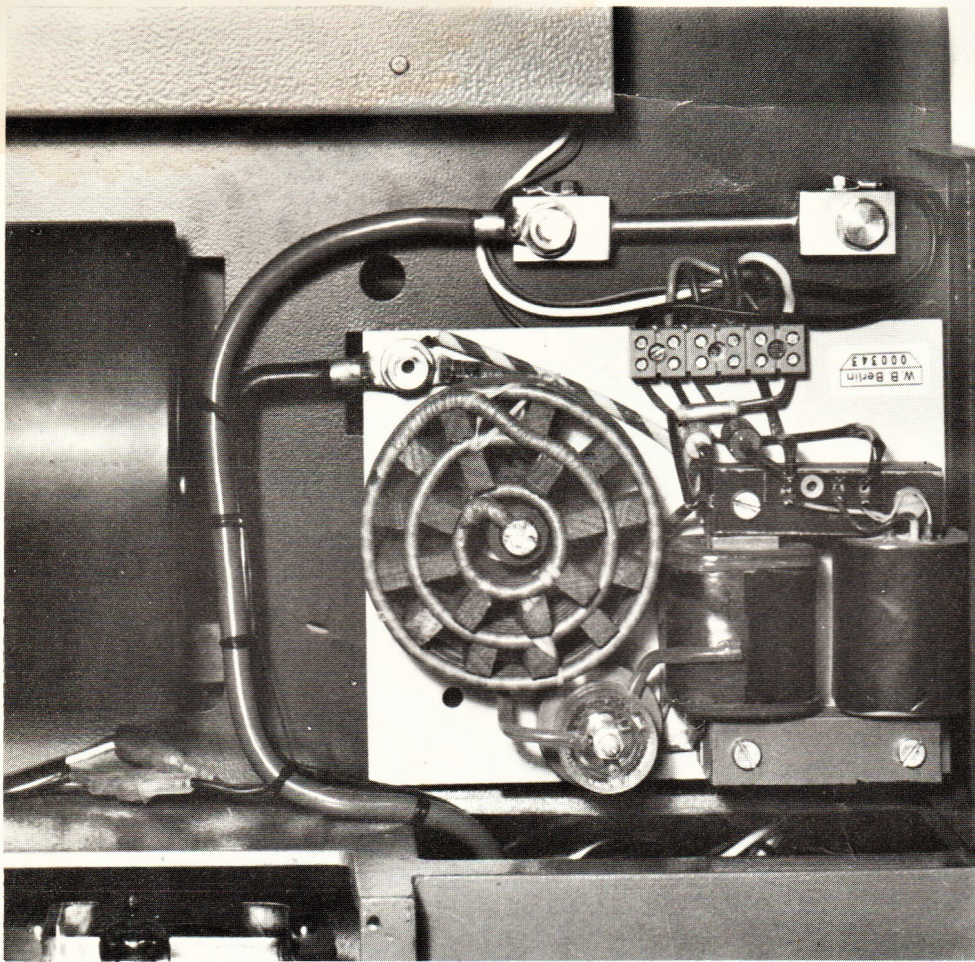


The OPTICAL SOUND SYSTEM provides distortion-free reproduction and features direct reading of the sound track through the use of an exciter lamp supplied by supersonic frequency.

A new design of light gate greatly improves the uniformity of the light beam scanning the sound track.

The light beam is picked up by a photocell of the SOLAR BATTERY type offering a signal to noise ratio better than 50 dB.

In the optical-magnetic reading combination models, the changeover from one to the other mode is made by simply moving one lever.



Projection light gate offering new stepped-up performance with a 25% increase in light output.

Focusing and framing obtained without displacement of image on the screen.

Film guided on jewels. Non-deformable film pad and counterpad to ensure flatness of surface throughout and sharpness of image on the screen.

Improved noiseless operation through the use of new materials and manufacturing techniques.

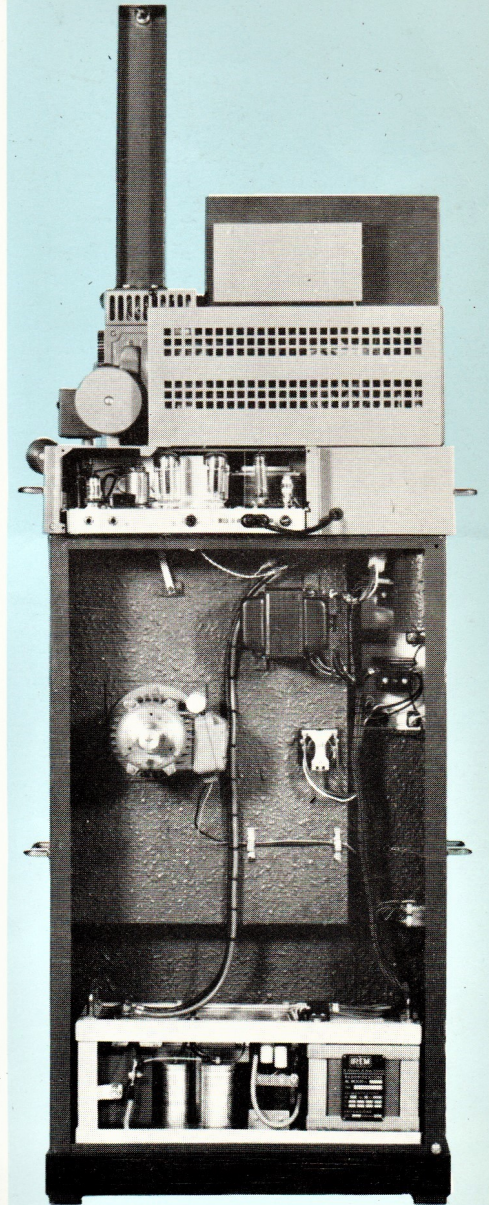
AUTOMATIC RESTORATION OF FILM LOOP even if the film loop is lost during projection, the lower loop will be automatically and quickly restored, ensuring safe and flickerless projection at all times.

The **HIGH FIDELITY AMPLIFIER** is transistorized with Silicon semiconductors to ensure reliable operation at ambient working temperatures. Five controls are provided for **VOLUME** and **TONE ADJUSTMENT** thereby permitting correct volume setting for optical reading, low impedance dynamic microphone and crystal phono pick-up.

The independently controlled tone adjustment for treble and bass provides the widest usable range of timbre without minimally affecting volume level.

The amplifier features a printed circuit design to permit easy access to all components for service or performance checks. Power output is 40 Watts with less than 1% distortion.

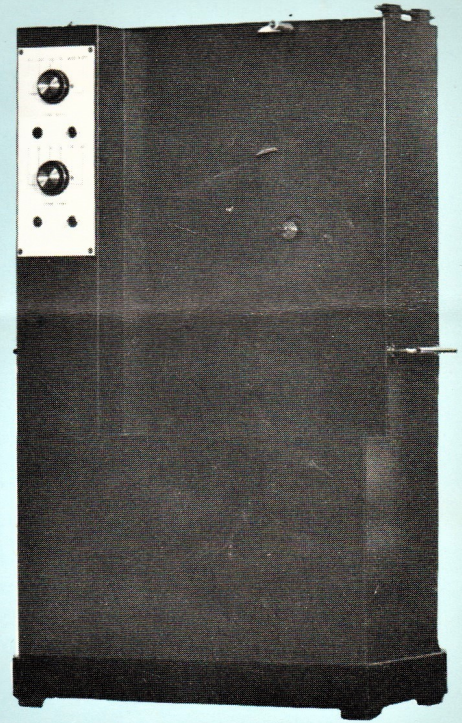
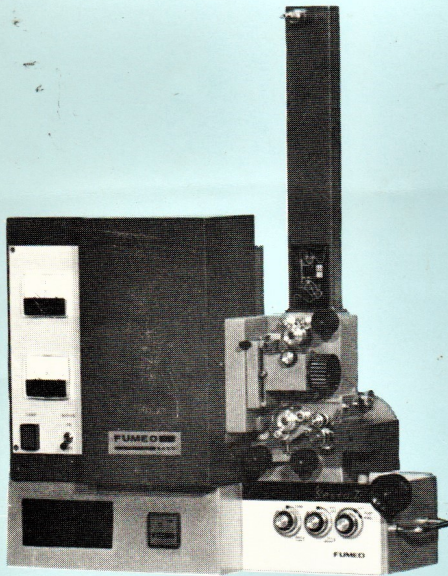
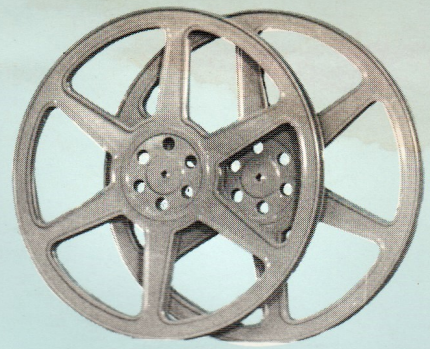
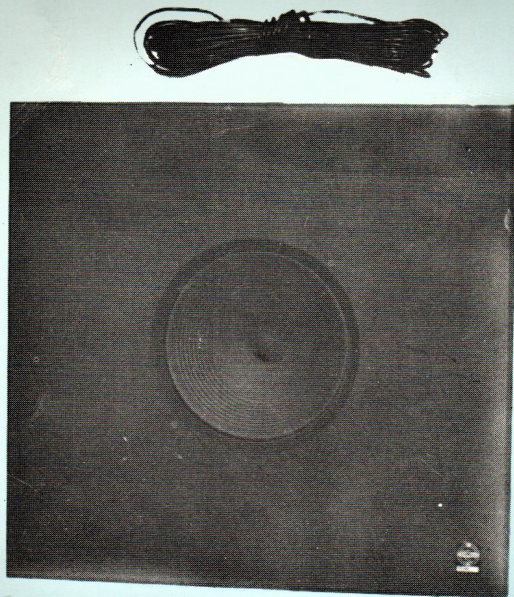
Built to DIN specifications, the **XENON LAMP STRIKER** unit is designed to safeguard the life of the lamp and through the use of a spark gap of special design safe ignition is ensured even when lamp is hot. By means of the special variable stray flux transformer the triggering current drawn by the lamp is automatically regulated to within safe limits thus avoiding electrode consumption.



The 12 pole **SPECIAL MOTOR** provides constant and controlled film tension for perfect rewinding. Inherent functional variability of conventional clutch drive systems resulting in torn film perforations or insufficient power for correct take-up during the final phase is thus completely eliminated.

This same motor also provides for fast film rewinding.

The cabinet stand of the projector houses the **SINGLE PHASE RECTIFIER** for supplying the projection lamp.



fumeo SpA

20127 MILANO Italy - Via A. B. Cairoli 53 - ☎ 2828391 - 2826318 - 2894982 - 2894816

Technical Specifications

Osram XBO900 Watt projection lamp operating current 42 Amps. Extra-brightness high-resolution professional-type coated projection lens ISCO Kiptaron 50 mm F 1:1.3; 35 mm F 1:1.3 and 65 mm F 1:1.6 lenses available upon request. Micrometric focusing (eliminates need to rotate lens thus avoiding displacement of projected image on screen). Anamorphic lens and associated lens support for Cinemascope projection (both available upon request). Lamp cooling by powerful tangent exhaust blower. Silent ventilation at film gate provided by forced air (Torrington fan). Single-phase 2-pole induction motor. Double film-transport rollers. Three-tooth pull-down claw. Automatic restoration of film loop. Film projection speed 24 frames/sec (Synchronized 25 frames/sec availa-

ble upon request). Solar battery photocell. 12-pole motor for film winding and fast rewinding. Checking instrument (Time counter) for indication of Xenon lamp operating hours. Direct sound track reading. Exciter lamp supplied by a high frequency current. High fidelity completely transistorized amplifier, power output: 40 watts (50 W M.P.), distortion less than 1%. IREM single-phase rectifier and wired into projector cabinet base. Line voltage and current control meters for Xenon lamp. Line voltage and Xenon lamp current regulators. Built-in monitor loudspeaker with on-off control. Independent film/microphone volume control. Separate tone controls for treble and bass.

Input jacks for phono pick-up and low impedance dynamic microphone. Permanent magnet 12-inch loudspeaker (dual sound channel unit available upon request). Arms can accommodate new film reels of 1500-metre capacity. Film reel locking of new design. Easier handling due to possibility of removing projector from base. Projector weight (without loudspeaker): 131 Kg (289 lbs). Dimensions without film reels: 64 x 173 x 33 cm. (25 3/16" x 68 1/8" x 13") Finish: two-tone grey and black.

Area sales representative: